

PKF

RadiusCore

Installation Guide

Last Updated: 11th September 2020
for application version 0.18.0 (beta)

Contents

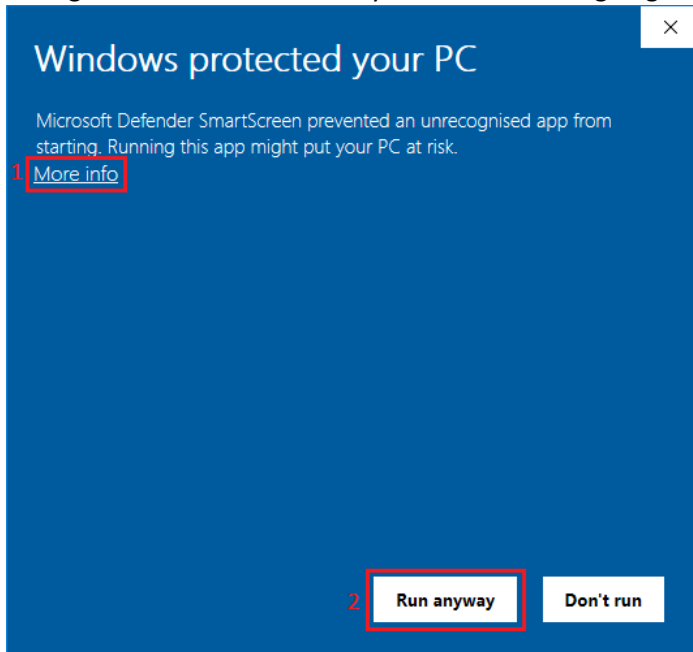
1. Prerequisites	2
2. App Installation	2
3. Troubleshooting RadiusCore Login	4
3.1. ODBC Driver for SQL Server	4
3.2. Microsoft .NET Framework 3.5	5

1. Prerequisites

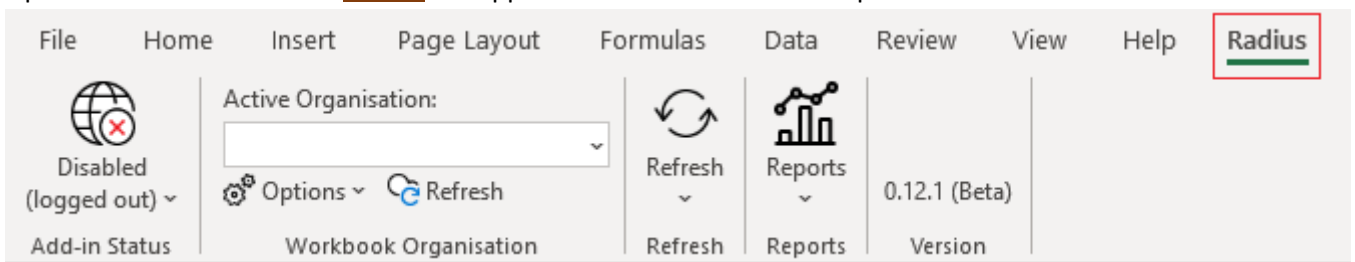
- Windows 10.
- Microsoft Excel 2016 or newer (i.e. Office-365).
- Internet connection.

2. App Installation

1. Close all instances of Microsoft Excel.
2. Run RadiusCore.exe
3. If you see a 'Smart Screen' window, proceed with setup by pressing 'More Info' -> 'Run Anyway'. You are seeing this because we do not yet have verified signing on our installer. We are in the process of fixing it.

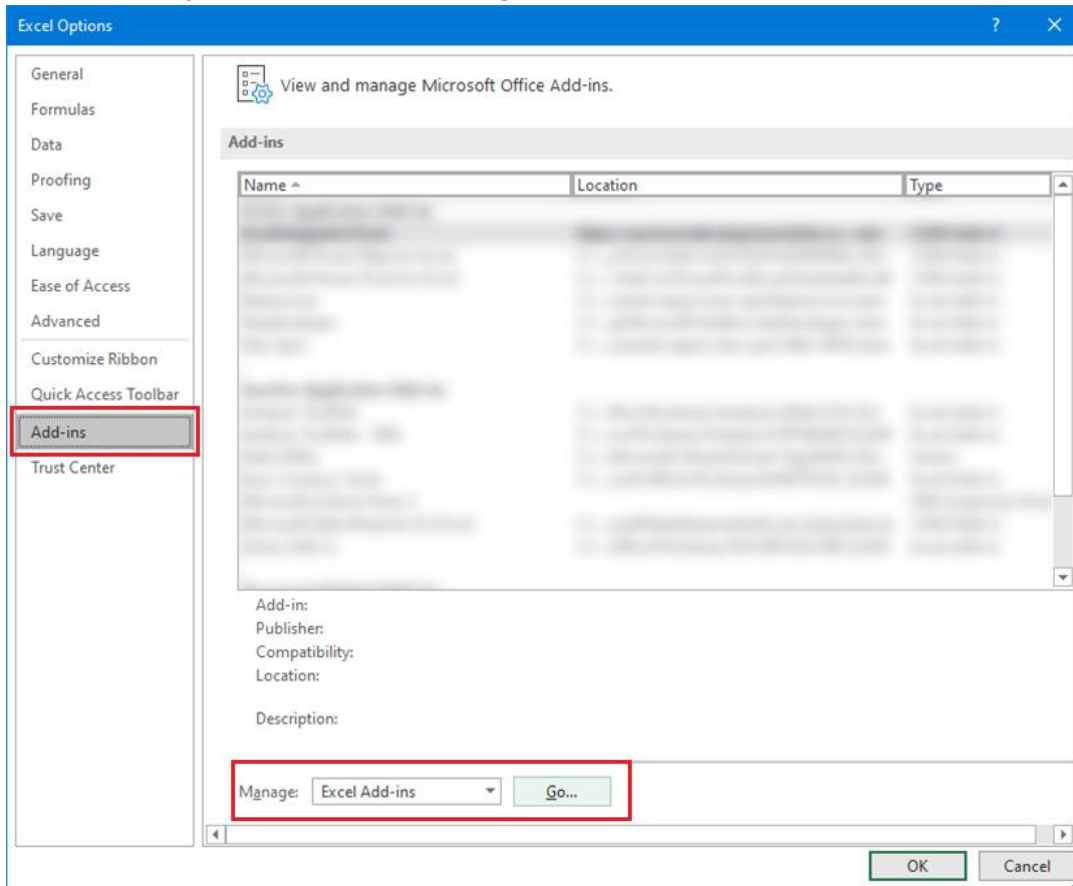


4. Advance through the prerequisite setup to install a Microsoft ODBC Driver.
Note: If you do not see the 'Prerequisites Setup' then you already have the required driver installed and can continue to the next step.
5. Once the ODBC prerequisite is installed, proceed with and complete the RadiusCore setup.
6. Open Microsoft Excel. If the **Radius** tab appears then installation is complete!

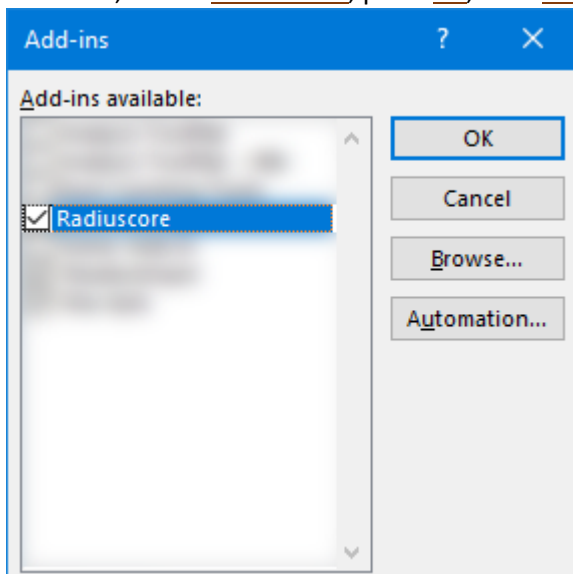


NOTE: If you cannot see Radius in the Excel Ribbon please complete steps 7-9

7. Select **File** -> **Options** -> **Add-ins** -> **Manage Excel Add-ins** -> **Go**



8. In the list, **untick RadiusCore**, press **Ok**, then **Ok** on the next menu.



NOTE: If RadiusCore is not present in this list, follow these steps:

- press **Browse**.
- Navigate to **C:\Users\%USERNAME%\AppData\Local\RadiusCore**
NOTE: AppData is a hidden folder, you will need to enable hidden items to access it (View->Hidden Items)
- Select **RadiusCore.xlam** and press **Open**.

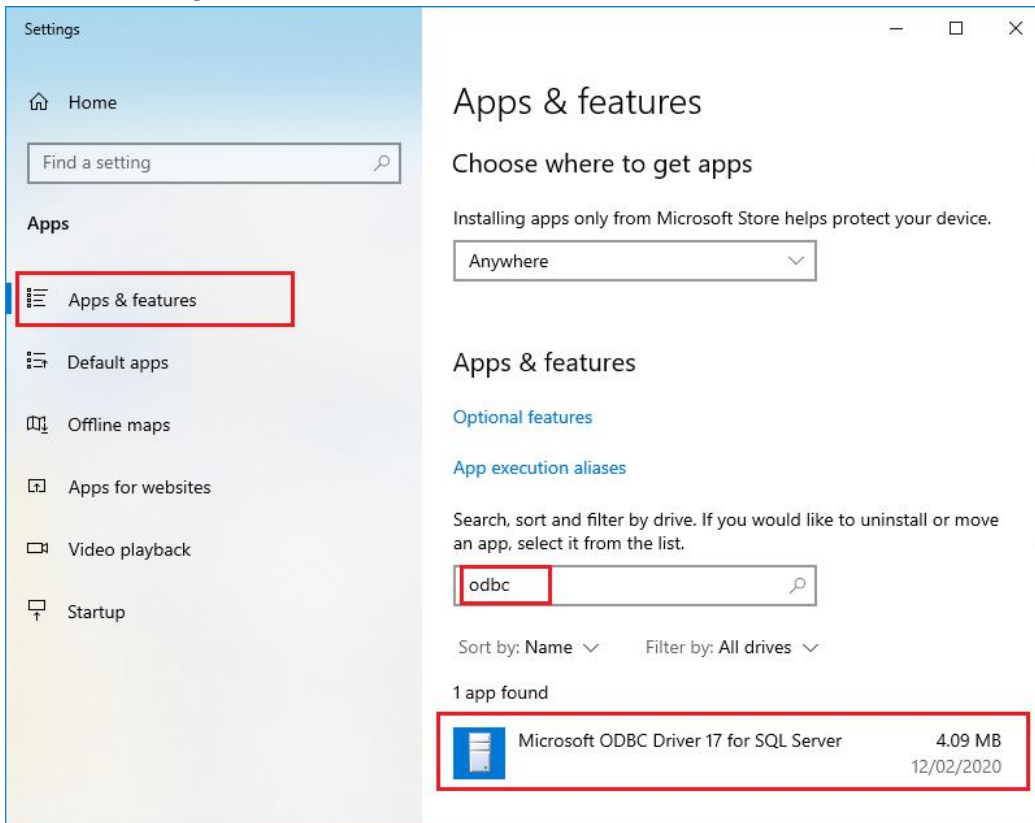
9. Repeat steps 7 & 8, except this time **tick RadiusCore**.
10. Check for **Radius** in your Excel ribbon (per step 6). If it is showing, setup is complete!

3. Troubleshooting RadiusCore Login

If you are having issues logging into RadiusCore after your initial setup, please try the following troubleshooting steps.

3.1. ODBC Driver for SQL Server

Follow this process to ensure Microsoft's ODBC Driver installed successfully. Navigate to 'Apps & Features' in Windows settings and search for it. You should see the ODBC driver listed as in the screenshot below.

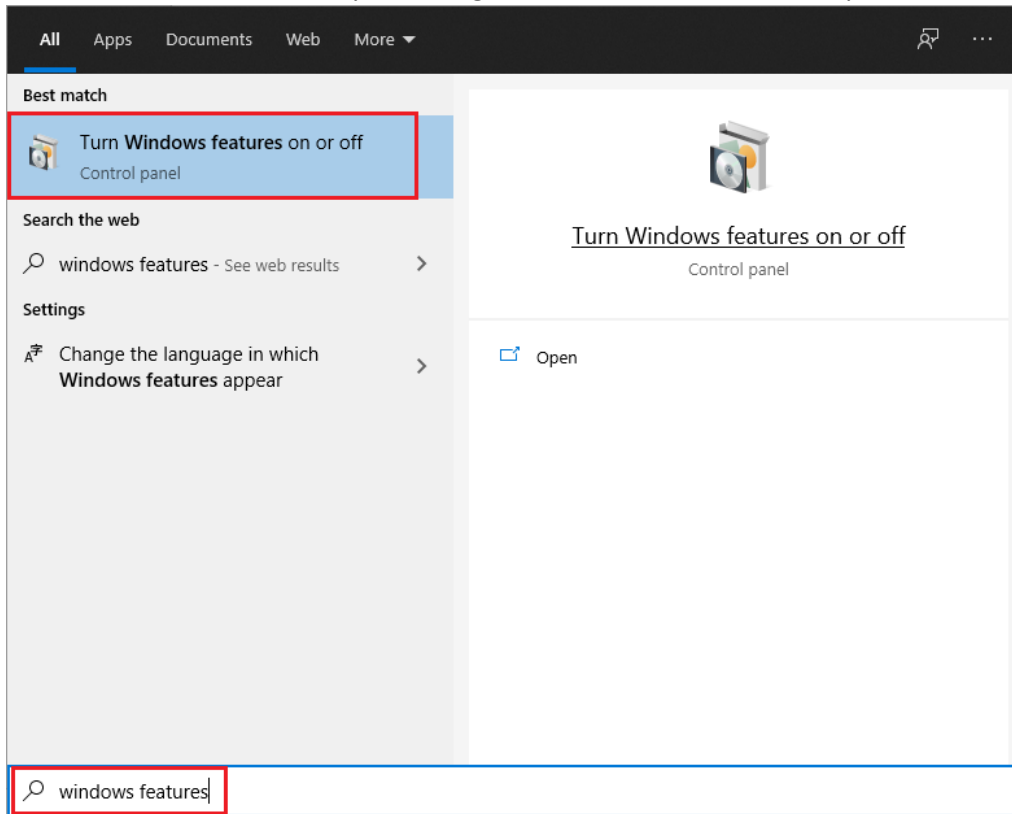


If you cannot see the driver, please run the RadiusCore installer again and tick 'Microsoft ODBC Driver 17 for SQL Server' in the prerequisites install section. Once you have completed this install, you can cancel out of the RadiusCore install that comes up afterwards.

3.2. Microsoft .NET Framework 3.5

While RadiusCore does not strictly require .NET Framework 3.5, sometimes having it available can help with platform compatibility. If you still cannot login after ensuring the Microsoft ODBC driver is installed (as explained in section 3.1), please follow these steps to install .NET Framework 3.5:

1. Access 'Windows Features' by searching in windows or via the control panel.



2. Ensure the box for .NET Framework 3.5 is filled in (as pictured below). If it is then you already have .NET Framework 3.5 installed. If it is not, press the box to fill it in and press 'OK'. Windows will ask to download and install some files, agree, and wait until the installation is complete.

